

EDFUNDERS PRESENTS

# What If Harvard, Howard and Princeton Offered Courses at Every Title I High School in the U.S.?

April 25, 2022



APRIL 25, 2:15 PM ET

# What If Harvard, Howard and Princeton Offered Courses at Every Title I High School in the U.S.?



Leslie Cornfeld  
National Education  
Equity Lab



Arne Duncan  
Former US Secretary  
of Education



Dr. Wayne Frederick  
Howard University



Henry McCance  
McCance Foundation



LaVerne Evans Srinivasan  
Carnegie Corporation  
of New York



**Grantmakers**  
FOR EDUCATION

[www.edfunders.org](http://www.edfunders.org)





# NATIONAL EDUCATION

— EQUITY LAB —



Talent is  
evenly  
distributed  
and  
opportunity  
is not.

We aim to  
change that.

## Our Mission:

Cultivating a College-Going Culture at High Schools Nationwide



[Front Page New York Times Article Here](#)



# How We Began



**What would happen if we brought courses from the most selective universities in the country into high schools serving historically underserved communities?**



**Advisory  
Board**



**Arne Duncan**



**Robert Runcie**



**Jenny Rickard**



**Marian Wright Edelman**



**LaVerne Srinivasan**



**Robert Balfanz**



**Angela Duckworth**



**Donald Brown**



**Vivian Riefberg**



**Wayne Frederick**



**Henry McCance**



# Our University and College Partners



Georgetown  
University



HOWARD  
UNIVERSITY



Stanford  
University



Spelman College®

*A Choice to Change the World*



Wesleyan University



PRINCETON  
UNIVERSITY



BROWN



Cornell University.



Wharton  
UNIVERSITY of PENNSYLVANIA

Yale



Arizona State  
University



BARNARD  
BARNARD COLLEGE • COLUMBIA UNIVERSITY

HARVARD  
Extension School



Penn  
UNIVERSITY of PENNSYLVANIA





# SY 2022-23 Course Opportunities

All courses are career pathways courses

## Humanities



**Western Way of War: Interdisciplinary History and Sociology**



**Poetry in America**



**Raise Your Voice! Analytical Writing for College**



**Principles of Criminal Justice**

## STEM



**College Algebra**



**Introduction to Computer Science**



**Cornell University**

**Big Data for Big Policy Problems**



**Introduction to Cloud Computing**



**Environmental Studies and Justice**

## Business



**Essentials of Personal Finance**



**Cornell University**

**Big Data for Big Policy Problems**



**Introduction to Microeconomics**

## Social Sciences



**Introduction to Psychology**



**The Psychology of Passion, Perseverance and Success**



**Introduction to Microeconomics**



**Georgetown University**

**Map of the Modern World: School of Foreign Service**





# A few of our 90+ District Partners



BALTIMORE CITY  
PUBLIC SCHOOLS



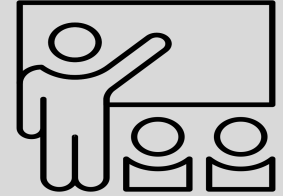
# Our Model

**1** College Credit-Bearing Courses from Top Colleges and Universities



**2**

Classroom Co-Teachers



**3** University Teaching Fellows

**4**

Access to Personal Technology



College  
Advising  
Corps

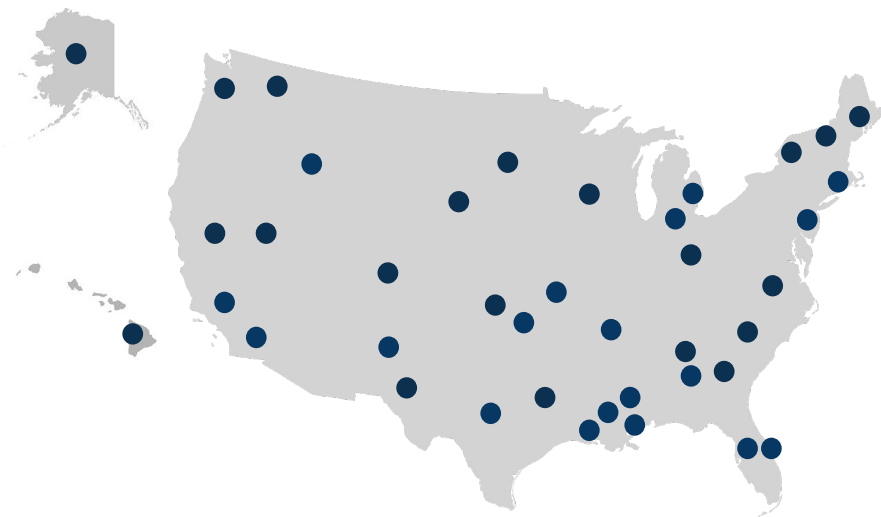
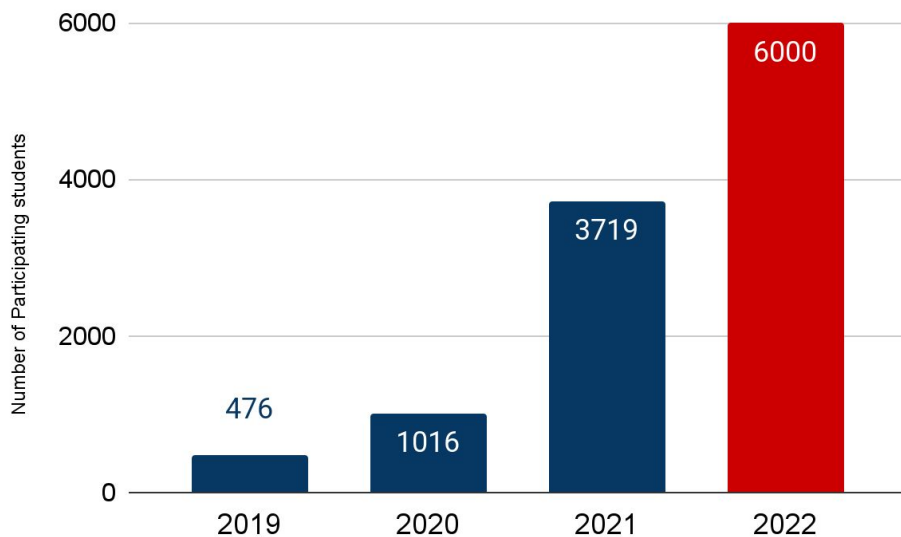
common  
app

**5**

Supports & Community

# Designed for Scale

## 10,000+ Students Served



**180<sup>+</sup>** **HIGH SCHOOLS** *across*

**90<sup>+</sup>** **DISTRICTS** *in*

**32** **STATES**



# Results to Date

**84%**

of students completing the course **passed, earning free college credits**

**90%<sup>+</sup>**

of students would **recommend this opportunity to their peers**

**98%**

teachers reported **increased college readiness and confidence**

**100%**

of participating pilot districts **asked to participate in future course offerings**



# What is the per student cost?



~~\$4,500~~

Some universities charge up to **\$4,500 per student per course**



\$250

Schools, Districts or States pay **only \$250 per student for Ed Equity Lab courses**



\$0

**No cost** to students and families



## Next Steps for Scale

There are **~5 million 11th and 12th grade students** in Title I high schools across the U.S..



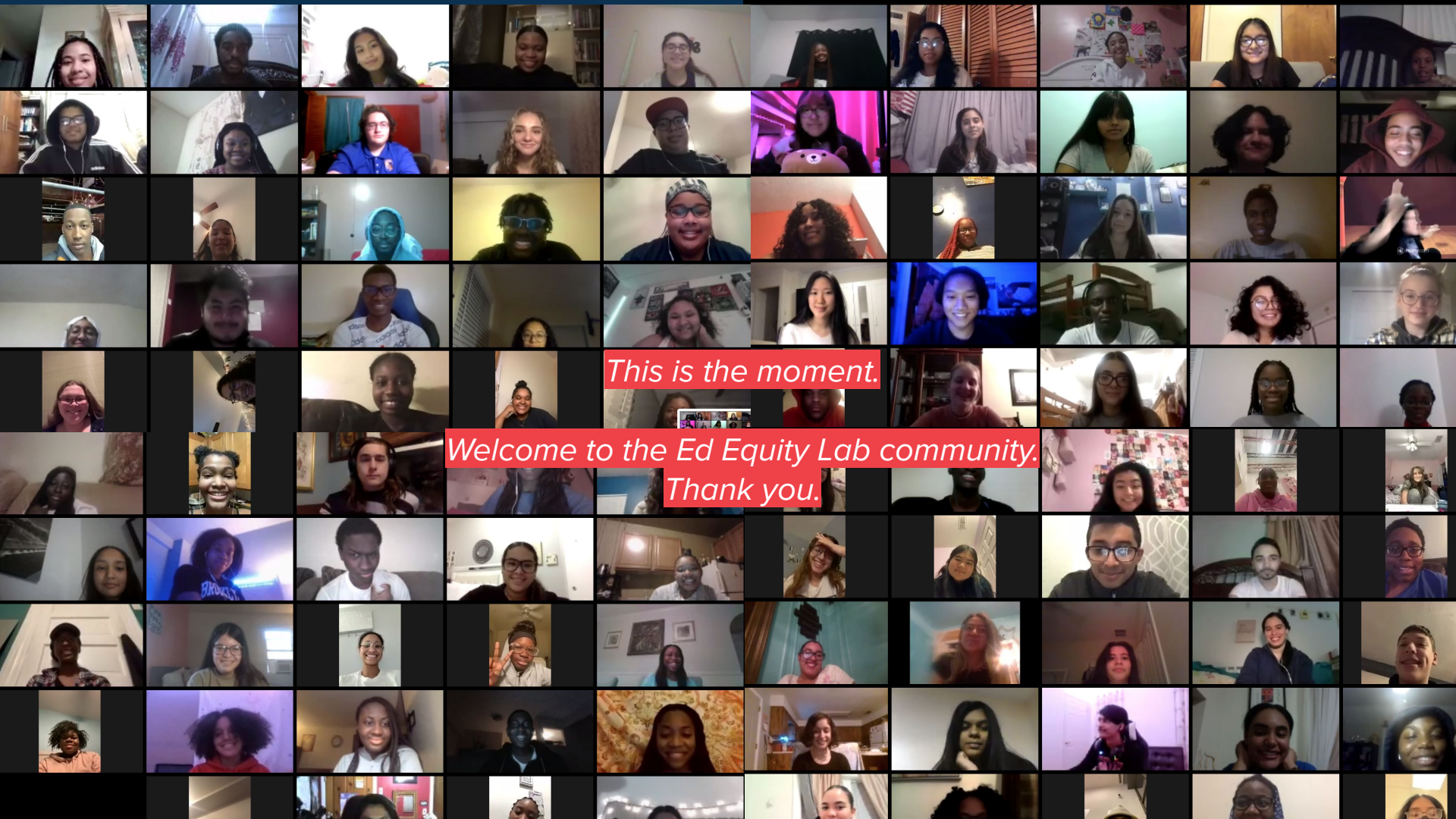
**1.3 million (~25%)** of these high school students are in **40 school districts**.

We are currently in **17** of these districts.

We aim to offer this opportunity in districts serving **25% of all Title 1 students in the U.S.** over the **next two years**







*This is the moment.*

*Welcome to the Ed Equity Lab community.  
Thank you.*

## UPCOMING PROGRAMS

### APR 27 2022 @ 1PM ET

From Quick Fixes to Sustainable Change:  
Creating Education Systems that Embrace  
Relationships, Complexity and Equity

### APR 29 2022 @ 12PM ET

Philanthropy Catalyzing School-  
Community Partnerships for Summer  
Learning: Out-of-School Time  
Stakeholder Convening  
to Equity for AAPI Communities

### MAY 2 2022 @ 2PM ET

The Future of Education: Youth, Families  
and Communities as Educational Leaders

### MAY 3 2022 @ 2PM ET

More than a Monolith: Data  
Disaggregation as a Pathway to Equity for  
AAPI Communities

